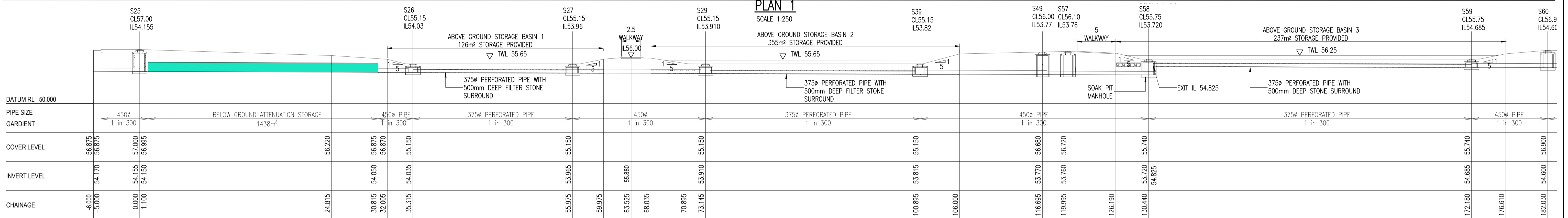
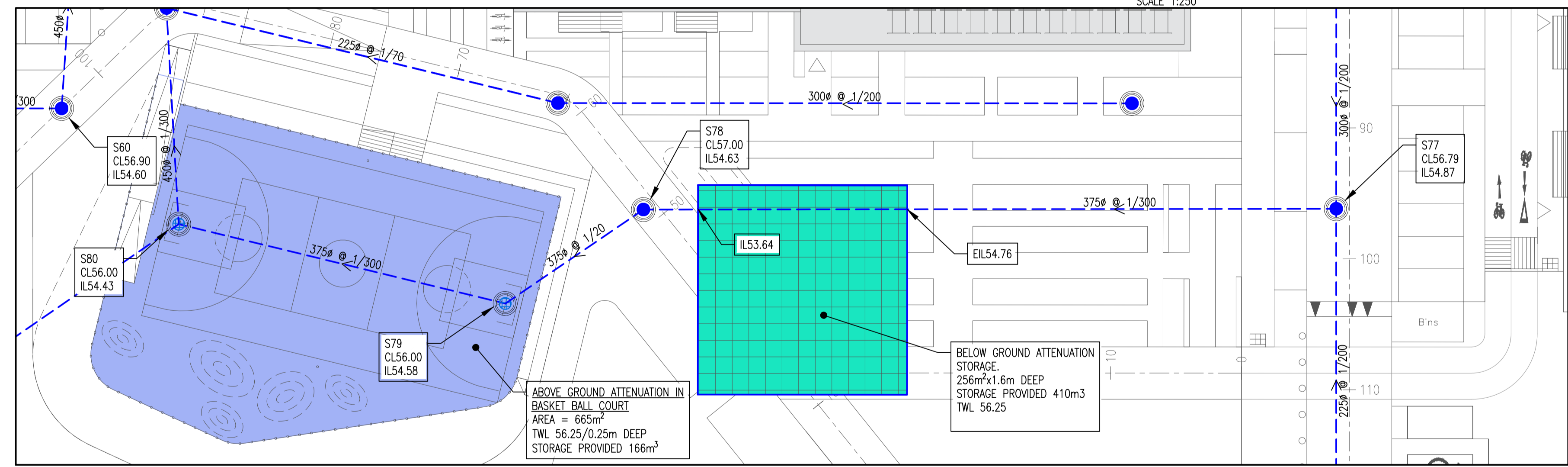


- NOTES:
- DO NOT SCALE. USE FIGURED DIMENSIONS ONLY.
  - THIS DRAWING IS TO BE READ IN CONJUNCTION WITH ALL OTHER RELEVANT ARCHITECTURAL AND ENGINEERING DRAWINGS.

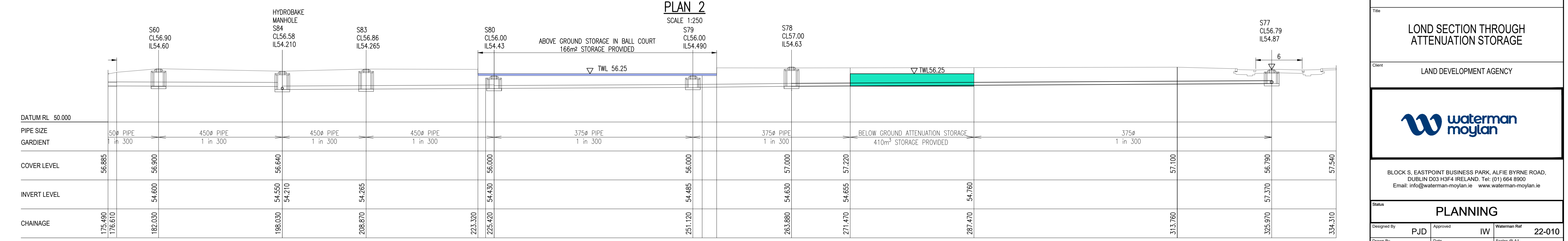


ATTENUATION LONG SECTION CH -6.00 TO 182



**LEGEND:**

- PROPOSED SURFACE PIPE AND MANHOLE
- PROPOSED PERFORATED PIPE WITH OPEN GRATED MANHOLE IN ATTENUATION BASIN
- PROPOSED STORMTECH ATTENUATION STORAGE
- PROPOSED ABOVE GROUND ATTENUATION BASIN WITH UNDERLYING STONE 500m DEEP
- ABOVE GROUND ATTENUATION STORAGE IN BASKETBALL COURT



ATTENUATION LONG SECTION CH 175.50 TO 334

Rev	Date	Description	By	CHK
Amendments				
Project: CHERRY ORCHARD POINT				
Title: LONG SECTION THROUGH ATTENUATION STORAGE				
Client: LAND DEVELOPMENT AGENCY				
BLOCK S, EASTPOINT BUSINESS PARK, ALFIE BYRNE ROAD, DUBLIN D03 H3F4 IRELAND. Tel: (01) 684 8900 Email: info@waterman-moylan.ie www.waterman-moylan.ie				
Status: <b>PLANNING</b>				
Designed By	PJD	Approved	IW	Waterman Ref: 22-010
Drawn By	PJD	Date	OCT 2023	Scale: @ A1: 1:250
Project - Originator - Volume - Level - Type - Role - Number				
Revision				
COP-WMC-PH1-00-DR-C-P250				